

AccessMat® - ADA compliant Beach Access Mat Installation

Now, Towns, Municipalities and private venues can make their beaches more accessible to all with our durable, lightweight, easily installed AccessMat®, ADA compliant beach accessibility surface. Our connection system is unique and allows you to connect the mats together to customize the length of pathway that best suits your beach.

Installing AccessMat®:

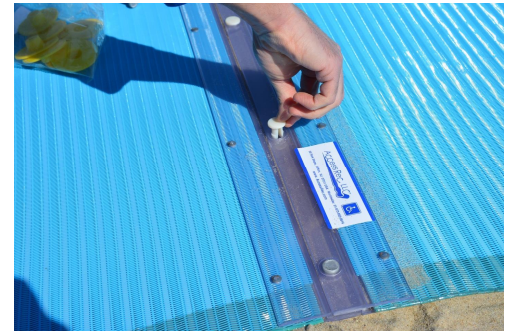
1. Begin by flattening out the area you wish to install AccessMat® with a landscape rake or broom. It is important but not mandatory to start with a flat surface to optimize users' satisfaction.
2. Place AccessMat® down and secure the beginning of it by inserting spikes through our connector's holes / anchoring caps. Once inserted, spikes should be flush with the connector / caps. Failure to ensure the spikes are flush may impact the safety of your pathway by creating a potential tripping hazard for your pedestrian users. Once one end is secured, unroll your mat. Make sure to unroll AccessMat® in a straight manner. Attempts to bend or curve the mat will cause ripples.
3. Dig a shallow trench at the extremity of AccessMat® where your beach pathway ends. Secure the mat down and cover the trench with sand for a smooth transition from beach to mat.



To maximize the firmness of the mat, insert a spike on each corner of the mat at a 45 degree angle, then proceed to pull the spikes gently toward you until they reach a 90 degree angle to, perpendicular to the ground. At that point you can proceed to nail these spikes, along with the remainder of the spikes, until flush with the end connector / caps.

Connecting two AccessMats®:

1. Simply align the extremities of your mats so they can be connected by inserting spikes / connector plugs through the holes of our plastic connectors placed at the extremity of each AccessMat®.
2. We recommend that you install spikes / plugs into every hole of our connector system to secure the mats together.

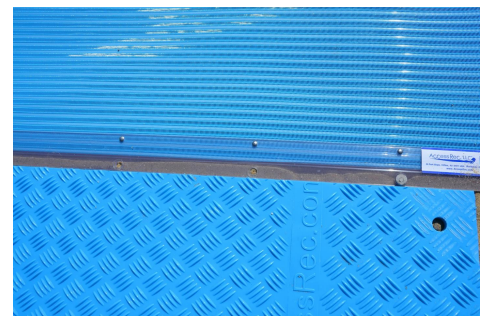


Maintenance:

Use a broom or leaf blower to keep the sand off AccessMat® pathway. When too much sand accumulates underneath, roll back AccessMat® and level the ground. Follow the above steps to reinstall the mats.

Versatility of AccessMat® ADA compliant beach accessibility mats:

Our range of beach accessibility mats offers a number of configurations to best suit your outdoor needs. For example create a T or L shape to maximize accessibility. AccessDecki and DuraDeck® are two great solutions to be combined with AccessMat® sections. AccessDecki can be used to create crossover pathways for vehicles or to create larger resting areas along your pathway.



Thank you for your business!

AccessRec Team